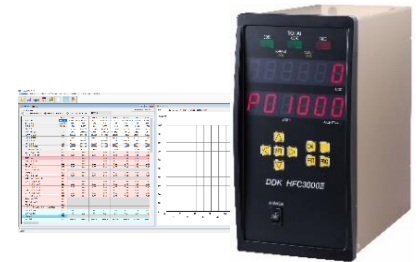


HFC3000 (II) Upgrading **New**

DATE: January 19th, 2018

- Selecting comma (,) or period (.) as decimal mark
- Adding Indonesian in language setup
- Operating new high-speed tools (up to 300 Nm)



User console: Selecting comma (,) or period (.) as decimal mark **New**

Different countries designate different symbols for the decimal mark. The user console automatically selects a comma (,) or a period (.) as the decimal mark when it is activated.

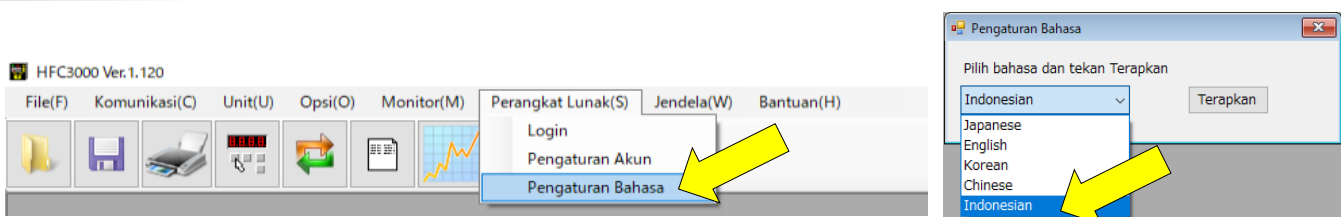
Axis No.	Upload Data Select	Available Data	Start Data	End Data		
Axis 1	Stored Data	0				
<div style="display: flex; justify-content: space-around;"> <div>Search</div> <div>Upload</div> <div>Save</div> <div>Clear</div> </div>						
Peak Torque	Final Torque	SNUG Torque	1st Peak	2nd Peak	Final Angle	DIFF Angle
100,2	100,2	30,0	15,0	75,4	115,7	-5,9
100,1		30,0	15,1	75,0	138,0	3,0

Axis No.	Upload Data Select	Available Data	Start Data	End Data		
Axis 1	Stored Data	0				
<div style="display: flex; justify-content: space-around;"> <div>Search</div> <div>Upload</div> <div>Save</div> <div>Clear</div> </div>						
Peak Torque	Final Torque	SNUG Torque	1st Peak	2nd Peak	Final Angle	DIFF Angle
100.2	100.2	30.0	15.0	75.4	115.7	-5.9
100.1		30.0	15.1	75.0	138.0	3.0

	A	B	C
1	Date : 2017-09-19		
2	Time : 10:00:41		
3	No.1	PeakTorque	0,05 [Nm]
4	No.1	FinalAngle	0,0 [deg]
5	No.1	IDdata	
6	WaveData		
7	No.1		
8	Angle	Torque	
9	-539,5	0	
10	-539	0,01	
11	-538,5	0,01	
12	-538	0,01	

	A	B	C
1	Date : 2017-09-19		
2	Time : 09:46:38		
3	No.1	PeakTorque	0.09 [Nm]
4	No.1	FinalAngle	0.0 [deg]
5	No.1	IDdata	
6	WaveData		
7	No.1		
8	Angle	Torque	
9	-539.5	0.04	
10	-539	0.04	
11	-538.5	0.03	

User console: Adding Indonesian in language setup **New**



User console: Automatically selecting your language

The user console software automatically selects your language based on your Windows OS language when it is activated for the first time.

- ✳ If none of the languages supported by the software match your Windows OS language, the software selects English language.

User console: Language table

	INDONESIAN	JAPANESE	ENGLISH	CHINESE	KOREAN
AFC3000	Not available	Available	Available	Available	Available
DSP3000	Not available	Available	Available	Available	Available
HFC3000	Available New	Available	Available	Available	Available
AFC1500 FUSION *1	Not available	Available	Available	Not available	Not available
DSP1500	Not available	Available	Available	Not available	Not available
MNR *2	Not available	Available	Available	Available	Available

*1: Hand Held Nutrunner *2: Micro Nutrunner

HFC3000 II controller: Operating new high-speed tools (up to 300 Nm)

The information listed below is also described in UPDATE REPORT NO.170905-1.

Tool Style	Model	Torque Range (Nm)
Angle tool	HFT-080M120-A-20	80.0
	HFT-130M120-A-20	130.0
	HFT-200M120-A-20	200.0
	HFT-300M120-A-20	300.0
Straight tool	HFT-055M120-S-20	55.0
	HFT-090M120-S-20	90.0
	HFT-130M120-S-20	130.0



Software Version

Software	Product Name	Version
Controller software	HFC3000(II) Controller	Ver. 1.208
PC software	User Console	Ver. 1.120

※ Available after November 16th, 2017.



ELECTRICAL ASSEMBLY TOOLS
DAI-ICHI DENTSU LTD.
 NUTRUNNER / HAND-HELD TOOL / SERVO PRESS

Headquarters

1-54-1, Shimoishihara, Chofu-City, Tokyo 182-0034 Japan
 TEL: +81-424-40-1465 FAX: +81-424-40-1436
 URL: <http://www.daiichi-dentsu.co.jp>
 E-mail: sales@daiichi-dentsu.co.jp

Kani Plant

690-1 Omori, Kani-City, Gifu, 509-0238 Japan
 TEL: +81-574-62-5865 FAX: +81-574-62-3523

