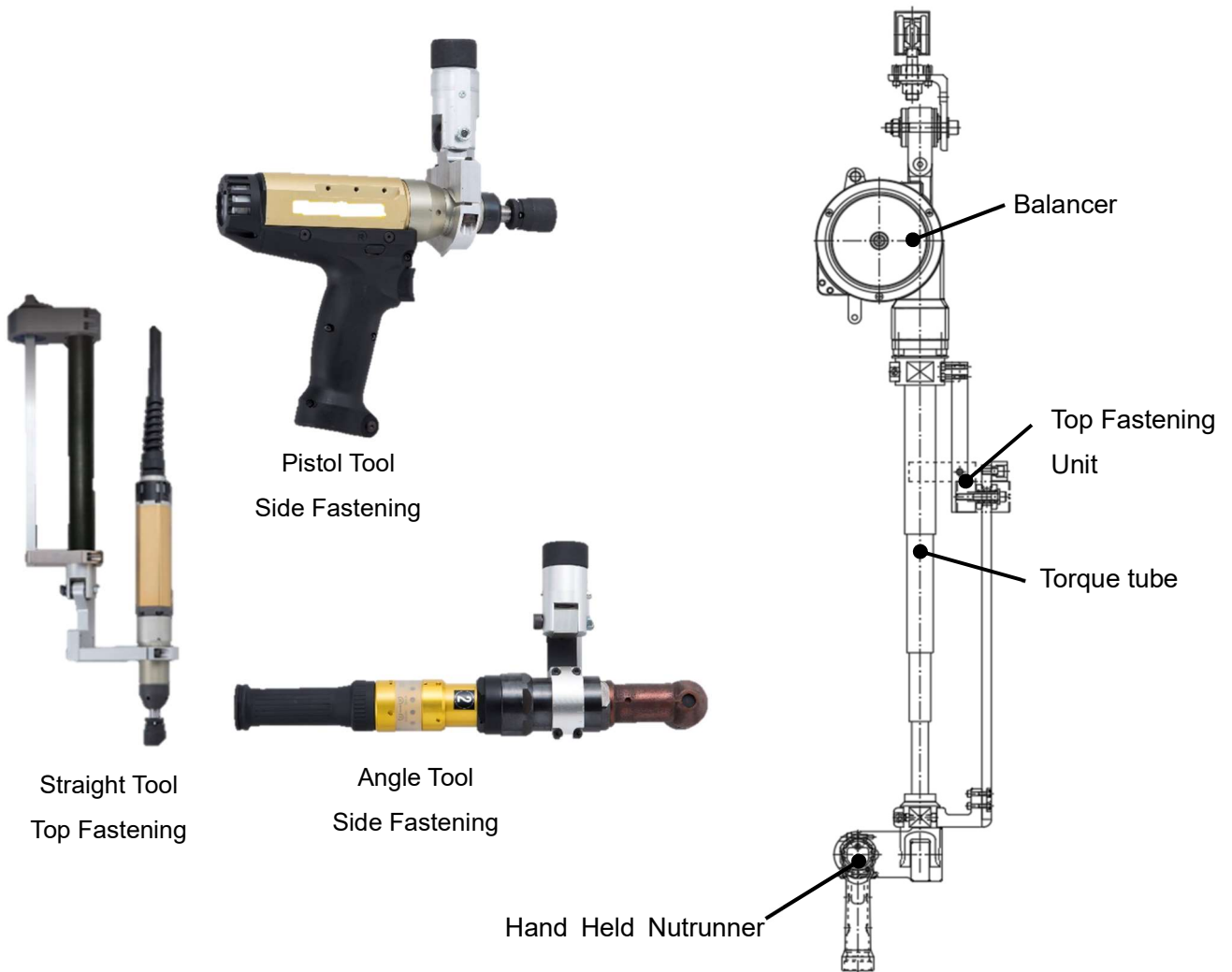


Carbon Torque Tube **NEW**

DATE: October 15th, 2018

- Reduces strain during fastening operations
- Meets your diverse needs on production site
- Provides smooth movement with using carbon (reducing sliding resistance by 80%)



Compact tube with built-in balancer

Unprecedented compact torque tube is available by having balancer wire built-in.

Part Number	Max. Torque (Nm)	Stroke Length (mm)	Hand Weight (kg)	Weight (kg)	Part Number for Top Fastening Unit (*) Option
TTR060-4100-04	60	1000 (*1)	2.0-4.0	5.5	16H-18001
TTR200-4100-05	200	1000 (*1)	3.0-5.0	6.0	

*1: Installing top fastening unit to torque tube shortens stroke length.

Meets your diverse needs on production site

Torque tube enables one-handed operation in top or side fastening because the torque tube can reduce reaction force and vibration caused by fastening operations.

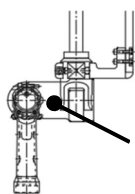
Top Fastening Unit

Installing this unit to torque tube provides top fastening. Making the unit attachable to/detachable from your torque tube can promptly change fastening operations (top or side fastening).

Accessories (*) Ask about accessories not listed in this report.

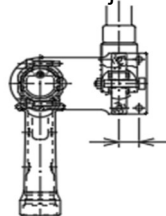
Tool Holder

Target Tool Type	Target Tool number	Part Number	Remark
Pistol Tool	HFT-035M80-P1	16H-18012	Clamp diameter size 35(mm): With offset adjustment
Straight Tool	HFT-030M80-DP-H	16H-18013	Clamp diameter size 34.4(mm): With offset adjustment
Angle Tool	HFT-015M50-A1-20 HFT-025M80-A1-20 HFT-040M80-A1-20 HFT-060M80-A-20	16H-18014	Clamp diameter size 40(mm): Rotation type

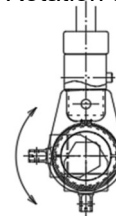


Tool Holder
(*) Option

With offset adjustment



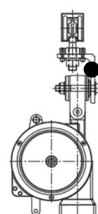
Rotation type



Available in both top
and side fastening

other

Target Application	Target Name	Part Number	Remark
Hanger rail	Pulley bracket (Daiken : 3-4WH)	16H-17041	For Daiken #3



Pulley bracket for hanger rail
(*) Option

NOTE) Torque tubes over 200 Nm are also available by request as custom-made products.

NOTE) Specifications and designs of the products are subject to change without notice due to improvements.

Head office: 1-54-1,Shimoishihara,Chofu-City,Tokyo 182-0034,Japan

Phone: 81-42-440-1465 Fax: 81-42-440-1436

Kani Plant: 690-1, Omori, Kani-City, Gifu, 509—0238, Japan

Phone: 81-574-62-5865 FAX: 81-574-62-3523



<https://www.daiichi-dentsu.co.jp>
sales@daiichi-dentsu.co.jp